

The Bugle

Welcome

We hope you have had a lovely time over the summer and are now ready to start the new school year.

The staff at Woolley road would like to welcome the Tin hut children and are looking forward to continuing to work with them.

We would also like to say a very big welcome to the new children and their families that are joining us this year.

General Reminders...

- Please remember that all children need to come to playgroup with a warm coat as they will continue with outdoor learning and play.
- Please ensure to label ALL of your child's clothing including your child's slippers. If things get misplaced it helps us to match the item to the child quickly before things get lost or muddled with another child's clothing.
- Please do not park on the white lines outside Woolley road, it makes crossing the road very dangerous for other parents and children.
- Please remember to ring us if your child is going to be absent or late to Pre-school.
- During the morning the children have access to fruit and water, they choose when to take it. They also receive milk during the day. There is no need to send in a snack or drink for your child.

For the first few weeks in playgroup we will be spending lots of time getting to know each other and doing lots of activities to introduce the children to the different opportunities available in playgroup. We want children to feel stimulated, safe and happy in playgroup and to feel really secure and comfortable with all staff. It is a big step for children to start playgroup and can take time for children to get used to new faces, surroundings and routines. All our staff are very experienced at helping children to settle. It is normal for some children to be distressed but as they get used to the routines and build relationships with staff they quickly settle. We will also be looking at Pre-school rules and routines, the children will be making a 'golden rules' chart together which will encourage;

- The use of kind words, hands and feet.
- Looking after our toys and our playgroup.
- Sharing and taking turns.
- Good listening.
- Staying safe.

Every time your child achieves something new it is recorded in their "Learning Journey" in their folder. In the folders your key person will put examples of work, photos and record what the children say. Please do not hesitate to come and see us either before or after playgroup if you have any questions or queries.



Our Pre-school is run by a voluntary parent committee in addition to our staff team and we are keen to get everyone involved.

We are planning an open session at each site for parents and carers to come and see what the children are learning and informally meet staff and committee members.

If you have a hobby or job that the children would be interested in then please ring Liz Neil (07729353802) to arrange for you to share your knowledge with the children.

You can also help at our fundraising events (running a stall, baking cakes etc) or our maintenance days (painting play equipment, gardening and fixing!). It is a good way to meet other parents and contribute towards our community.

We always welcome new people to our committee meetings and if you want to take on a role we are looking for people to help us with marketing (designing posters/flyers and promoting pre-school) and fundraising (working with other fundraisers to plan events and our raffles).

The committee has a key role in setting the budget, deciding on improvements to be made and guiding the overall management of Pre-school. If you'd like to get involved in any way then please drop us an email matlockpreschool@gmail.com or come along to our annual general meeting at 7.30pm on Wednesday 14th September at the Tin Hut.

The meeting will be followed by tea and cake and a chance to meet other parents.

Matlock Pre-school
Playgroup Association
Registered charity No.

512263

Issue 1

September 2016

Special points of interest:

Parking:

PLEASE do not park on the white lines or block peoples drives, it is for your children's safety!

Contact details:

Tin Hut: 01629 583639

Woolley Road: 07789737417

Liz Neil:

Please use in holiday time to contact pre-school or for general enquiries
07792 353802

Please let us know if there are any changes to your details.

E-mail :
matlockpreschool@gmail.com

Website:
www.matlockpreschoolplaygroup.yolasite.com

ANNUAL GENERAL MEETING

Summer Improvements

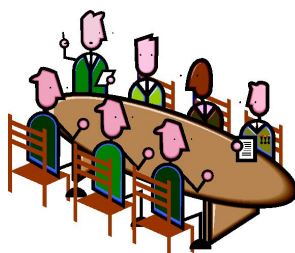
It's been a busy summer making long planned improvements to both sites. The Tin Hut has a brand new oak effect floor and the outside has had a fresh coat of paint, along with smart new fascia boards. This has all been possible because of the funds raised at our events such as the Christmas play and the summer fair. We are very grateful to local businesses for donating raffle prizes and refreshments and to parents for supporting the events.

At Woolley Road we have insulated the ceiling which will make a big difference to the warmth of the building over the winter. In addition to the funds we raised, we are very grateful to Matlock Town Council for their generous donation of £500 towards the project. Volunteers have also been busy laying a new paved area to the left of the building for the children's snack time.



Next Committee Meeting

Our next meeting will be held on Wednesday 14th September at 7:30pm at Tin Hut which is also our AGM



50 Year Anniversary

In 2017, Matlock Pre-school will have been running for 50 years so we are planning a special celebration at our Spring Fair.

We are looking for any photos you or your family may have for a display. If you have any photos please pop them in an envelope with any details (the year if possible) and your name, and bring in to Playgroup (we will take a copy and return them to you).



Dates for your diary

- 05/09/2016: Pre-School Opens (WR)
- 07/09/2016: Pre-School Opens (TH)
- 12/09/2016: Tin Hut Tots Start Back
- www.facebook.com/groups/1172706392762410
- 14/09/2016: AGM 7:30pm at Tin Hut - All Welcome
- 21/10/2016: Pre-School Closes
- 31/10/2016: Pre-School Opens
- 07/12/2016: Nativity at All Saints Church '10am Parents invited'
- 16/12/2016: Christmas Parties - TH Morning WR Afternoon
- 16/12/2016: Pre-School Closes
- 03/01/2017: Pre-School Opens
- 10/02/2017: Pre-School Closes
- 20/02/2017: Pre-School Opens
- 07/04/2017: Pre-School Closes
- 24/04/2017: Pre-School Opens
- 26/05/2017: Pre-School Closes
- 05/06/2017: Pre-School Opens
- 14/07/2017: Pre-School Closes

Things to watch out for

To enable us to protect children who have nut allergies please could we ask parents not to bring in any food treats (such as for birthdays) unless they have checked the ingredients carefully.

Packaging must be checked for:

Not suitable for nut allergy sufferers
This product contains nuts

If your child has any products which contain nuts in their lunch box, please let staff know so that they can take the necessary steps to ensure the safety of all the children in the setting.

Please contact the Staff if you have any questions or if your child is ill